



WKVM16
CONTROL VALVE



WKVM 16

monoblock directional control valve

Index - İçindekiler

Product Features
Ürün Özellikleri

General Specifications
Genel Özellikler

Order Coding
Sipariş Kodlama

Dimensional Data
Ölçüsel Bilgi

Performance Data
Performans Eğrileri

Hydraulic Specification
Hidrolik Devre

Inlet Options
Basınç (P) Hattı Opsiyonları

Spool Positioners
Sürgü Kontroller

Spool Options
SürgüTipleri

Auxiliary Valves
Yardımcı Valfler

Lever Types
SapTipleri

Outlet Options
Tank (T) Hattı Kapağı



General Specifications

Genel Özellikler

Product Features

- WKVM16 is largest monoblock valve series for nominal flow rate 100 lpm and operating pressures up to 300 bar
- Valve is equipped with an adjustable main relief valve
- Load hold check valves in each section
- Available in parallel circuit
- Wide range of spool options
- Available for auxiliary valves
- Interchangeable Ø19 mm spools
- Carry-over and closed center option
- Valve can be operated by manual, pneumatic, electro-pneumatic, hydraulic, electro-hydraulic, direct solenoid and remote cable control

Özellikler

- WKVM16 serisi 100 lt/dk ve 300bar maksimum çalışma basıncıyla en yüksek geçirgenliğe sahip monoblok serisidir
- Ayarlanabilir Ana Emniyet Valfi
- Her dilimde Yük Tutma Valfleri
- Paralel Devre
- Çeşitli Sürgü Tipleri
- Yardımcı Valfler
- Değiştirilebilir Ø19 mm Sürgüler
- Carry-over ve Kapalı Merkez İmkani
- Manuel, Halat Kontrol, Pnömatik, Elektro-Pnömatik, Hidrolik, Elektro-Hidrolik, Direk Elektrik kontrol imkanı

Standard Material Specifications Standard Malzeme Özellikleri

High Resistance Cast Iron Body *Döküm Gövde*
Hard Chromium Plated Interchangeable Spools *Sertleştirilmiş Krom Kaplama Sürgüler*
Steel spring caps *Çelik Yay Kapakları*
Aluminium Lever Caps *Alüminyum Sap Kapakları*
NBR Seals *NBR Sızdırmazlık Elemanları*

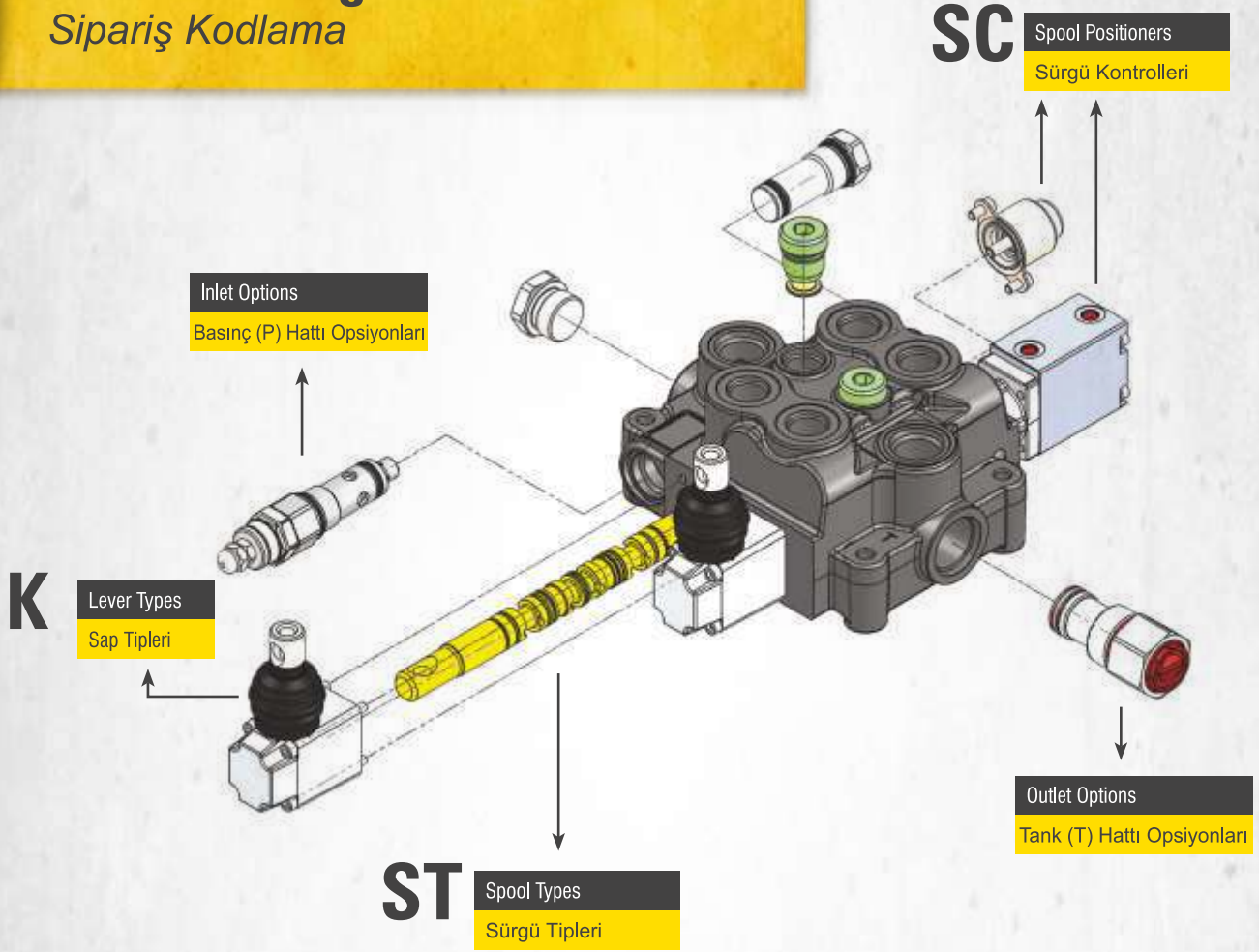
Working Conditions Çalışma Şartları

Recommended Oil Viscosity Range <i>Önerilen Yağ Viskozite Aralığı</i>	10 cSt to 75 cSt
Recommended Fluid Temperature Range <i>Önerilen Çalışma Sıcaklığı (°C)</i>	-20 to +80
Environmental Temperature Range <i>Önerilen Ortam Sıcaklığı (°C)</i>	-40 to +60
Maximum Contamination Level <i>Maksimum Kirlilik Seviyesi</i>	Class 10 (NAS 1638) 19/16 (ISO 4406)

Technical Specifications Teknik Özellikler

Nominal Flow <i>Debi</i>	100 lpm	26 US gpm
Number of Spools <i>Dilim Sayısı</i>	2 - 3	
Maximum Working Pressure <i>Maksimum Çalışma Basıncı</i>	300 bar	4400 psi
Maximum Back Pressure <i>Maksimum Tank Hattı Basıncı</i>	30 bar	430 psi
Internal Leakage <i>İç Kaçak Değeri</i>	4 cc - 9 cc (100 Bar; 32 cSt, 40°C)	0,24 - 0,54 in³/m (1450 psi; 32 cSt, 104°F)

Order Coding Sipariş Kodlama



WKVM162 - R(180) - 2x SC4 ST11 K3 / H

1 2 3 4

1

Valve Type Valf Tipi

WKVM16 Valve Series Valf Serisi
2 Number of Spools Sürgü Sayısı
C Port Thread Port ölçüleri

2

Inlet Options Pompa (P) Hattı Opsiyonları

R Main Relief Valve Ana Emniyet Valfi
180 Pressure Setting Basınç Değeri

3

Working Section Dilim

SC4 Spool Positioners Sürgü Kontrolleri
ST11 Spool Options Sürgü Tipleri
 Auxiliary Valves Yardımcı Valfler
K3 Lever Types Sap Tipleri

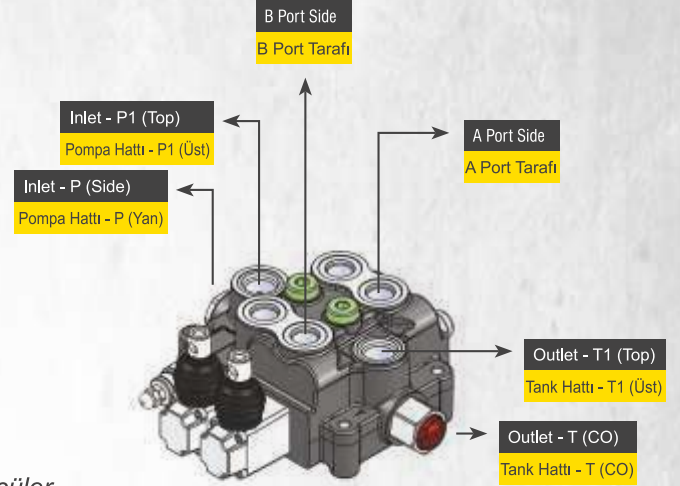
4

Outlet Options Tank (T) Hattı Opsiyonları

H Outlet Options Tank Hattı Opsiyonları

Dimensional Data

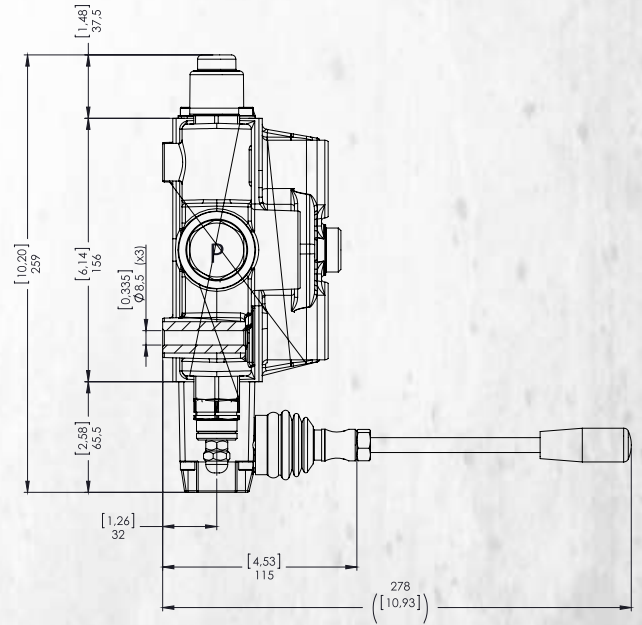
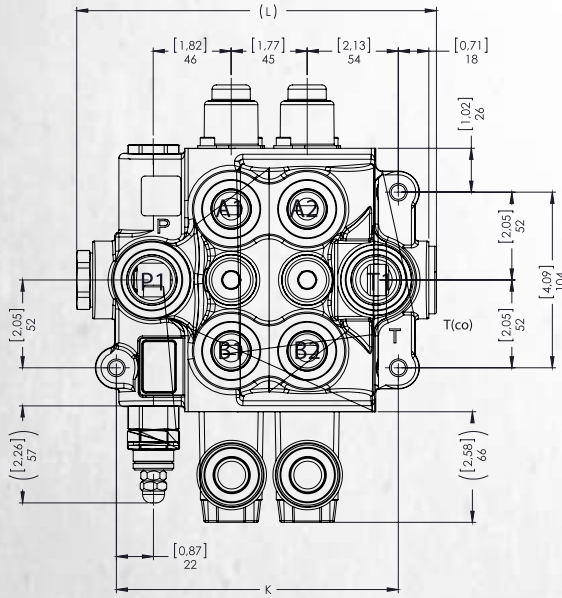
Ölçüsel Bilgi



Standard & Optional Threads Standart ve Opsiyonel Ölçüler

Thread Çalışma Şartları	Code Kod	P - P1	A/B	T1	T(CO)
BSP(Standard)	C	G 3/4"	G 3/4"	G 3/4"	G 3/4"
UN-UNF	N	1 1/16 - 12 (SAE 12)	1/16 - 12 (SAE 12)	1/16 - 12 (SAE 12)	G 3/4"
METRIC	Z	M22x1,5	M22x1,5	M22x1,5	G 3/4"

BSP threads are standard threads. Its necessary to code the port thread after valve series during ordering in monoblock valves. Example coding; WKVM162C-R(160)/SC1ST1
Valflerimiz standart olarak BSP Diş üretilmektedir. Talep edilen port ölçüleri monoblok valflerde valf tipi kodlamasından hemen sonra kodlanır. Örnek Kodlama; WKVM162C-R(160)/SC1ST1



Dimensions & Weight Ölçüler ve Ağırlık

Type / Tip	K		L		Weight Ağırlık	
	mm	inc	mm	inc	kg	lb
WKVM162	215	8.46	167	6.57	12.75	28.00
WKVM163	260	10.23	212	8.34	17.00	37.50

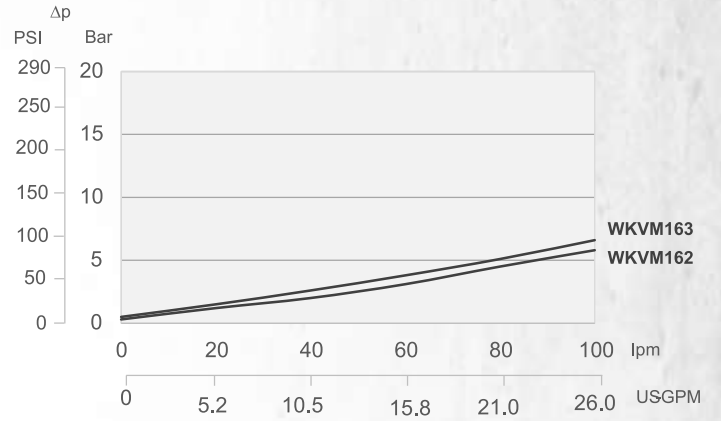
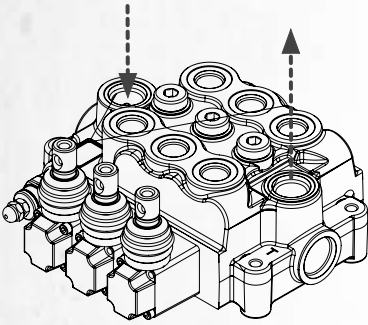
Given weights are for standard configurations.

Performance Data

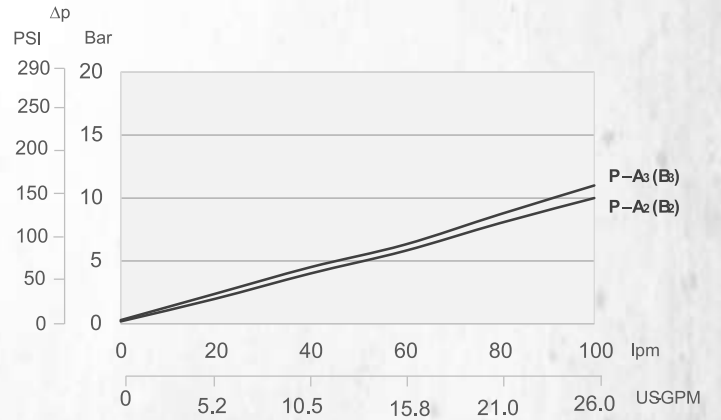
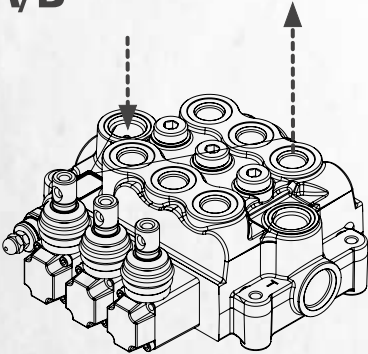
Performans Eğrileri

Pressure Drop Curves Basınç Kayıp Eğrileri

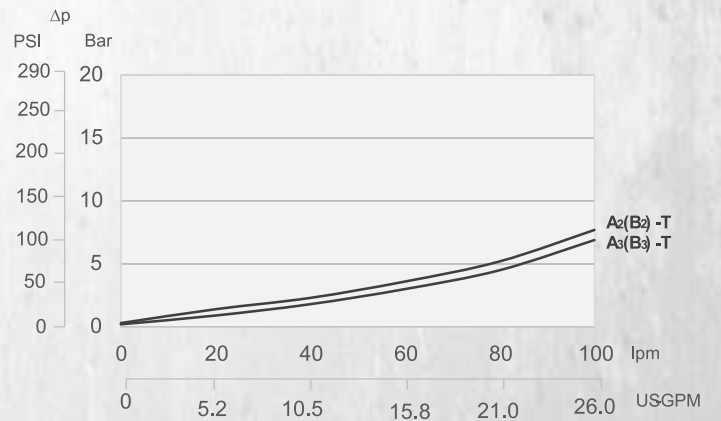
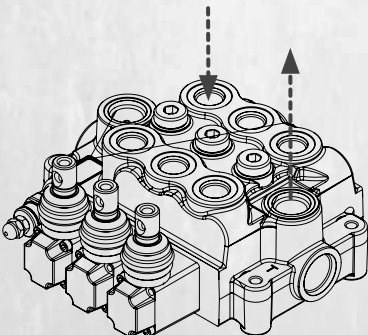
P - T



P - A/B



A/B - T



Hydraulic Specifications

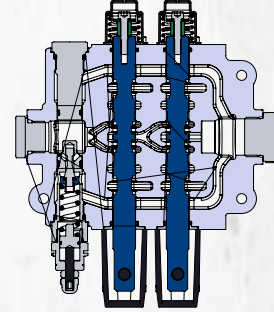
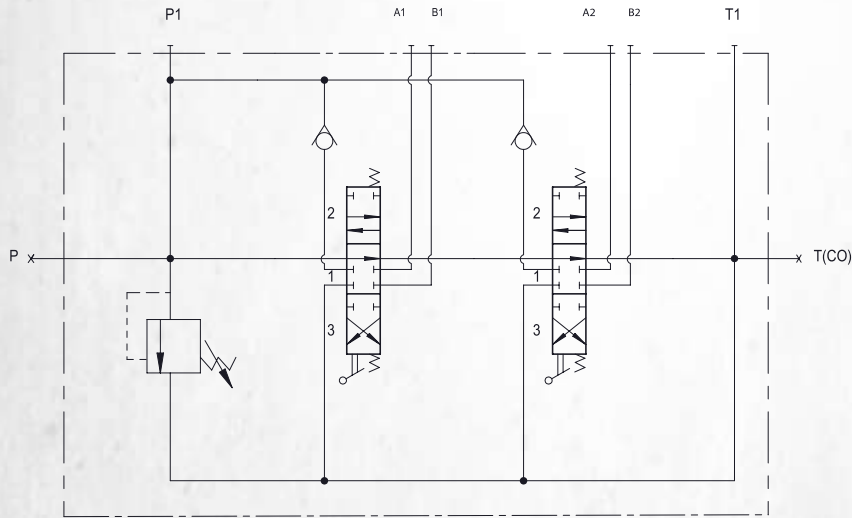
Hidrolik Devre

Parallel Circuit *Paralel Devre*

Code / Kod

**NO
CODE**

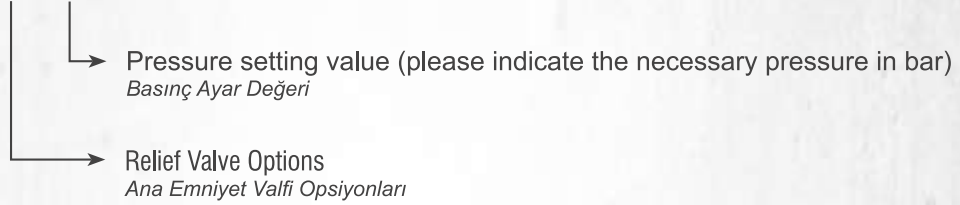
Standard configuration; Parallel circuit with upper inlet and outlet.
Standart konfigürasyon; Paralel devre, P1 ve T1 açık, P ve T(CO) kör şeklindedir.



Inlet Option

Basınç (P) Hattı Opsiyonları

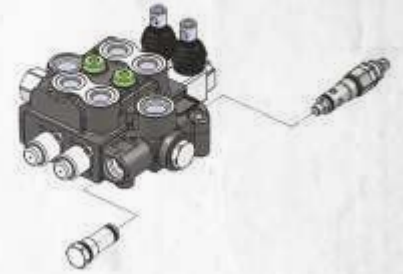
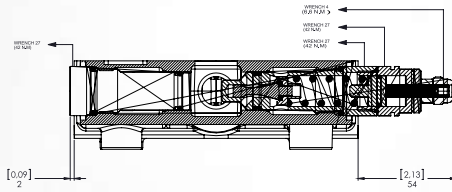
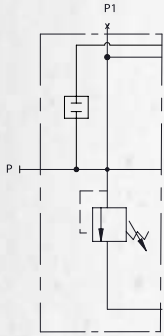
WKVM162C- **R(180)** / SC4 ST11 K3 / H



Adjustable Direct Acting Main Relief Valve *Ayarlanabilir Ana Emniyet Valfi (Direk Etkili)*

Code / Kod

R

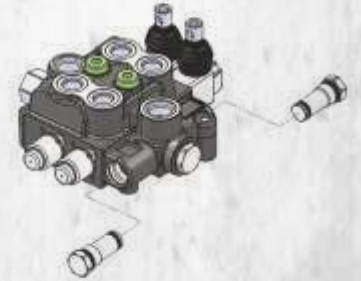
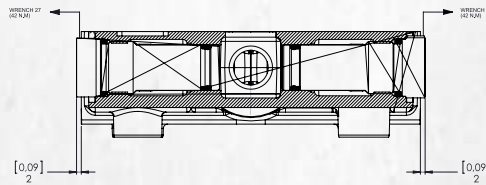
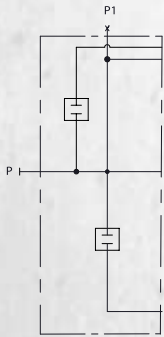


Please indicate the necessary pressure setting value. MRV is preset to 180 Bar at 15 lpm unless otherwise specified.
Lütfen ayarlanmasını istediğiniz basınç değerini bildiriniz. Ürünler standart olarak 15 lt/dk'da 180 Bara ayarlanır.

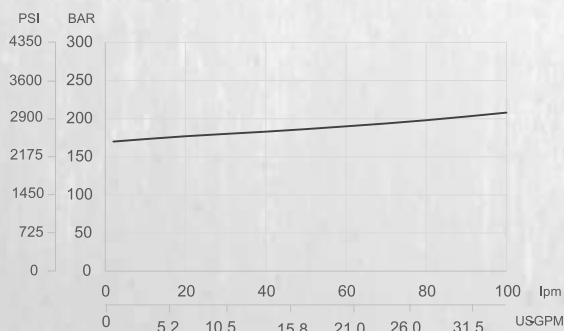
Main Relief Valve Blanking Plug *Emniyet Valfsiz*

Code / Kod

Y



Main Relief Valve Performance Data *Ana Emniyet Valfi Performans Eğrisi*



Measured with 32 cSt hydraulic oil @ 40°C and neglected tank line pressure.
32 cSt hidrolik yağ ile 40°C'de, tank hattı basıncı ihmal edilerek ölçülmüştür.

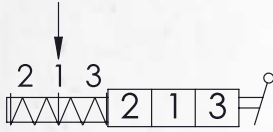
Spool Positioners Sürgü Kontrolleri

WKVM162C- R(180) / **SC4** ST11 K3 / H

↳ Spool Positioners
Sürgü Kontrolleri

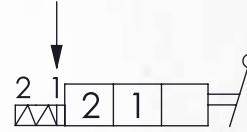
Spool Positioners with Spring Return *Yay Dönüslü Sürgü Kontrolleri*

SC1 3 Positions Spring Return
3 Pozisyon Yaylı



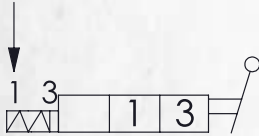
Stroke : ± 7 mm

SC5 2 Positions Spring Return
2 Pozisyon Yaylı



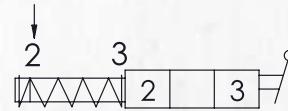
Stroke : -7 mm

SC6 2 Positions Spring Return
2 Pozisyon Yaylı



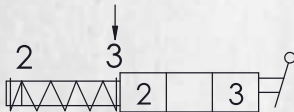
Stroke : +7 mm

SC11 2 Positions Spring Return in 3rd Position
2 Pozisyon, 3. Pozisyona Yaylı



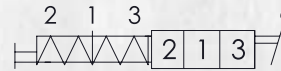
Stroke : +14 mm

SC12 2 Positions Spring Return in 2nd Position
2 Pozisyon, 2. Pozisyona Yaylı



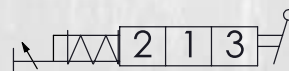
Stroke : -14 mm

SC25 3 Position Spring Return with male M8 pin extension for dual control
3 Pozisyon Yaylı, M8 Erkek Uzatmalı



Stroke : ± 7 mm

SC33 3 Position Spring Return with stroke limiter
3 Pozisyon Yaylı, Strok Limitleyici

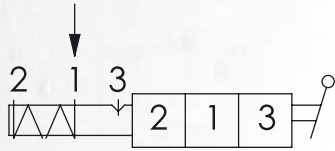


Stroke : +7 mm (Max.) / -7 mm

Spool Positioners with Detent

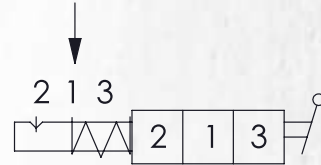
Detantlı Sürgü Kontrolleri

SC2 3 Position Spring Return, Detent in Pos. 3
3 Pozisyon Yaylı, 3.Pozisyon Detantlı



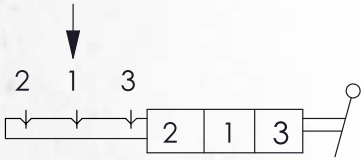
Stroke : ± 7 mm

SC3 3 Position Spring Return, Detent in Pos. 2
3 Pozisyon Yaylı, 3.Pozisyon Detantlı



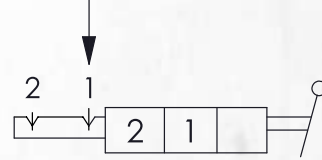
Stroke : ± 7 mm

SC4 3 Position Detent in All Positions
3 Pozisyon Detantlı



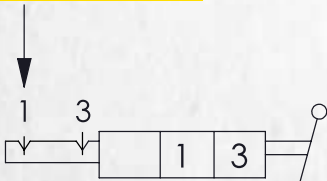
Stroke : ± 7 mm

SC7 2 Position Detent
2 Pozisyon Detantlı



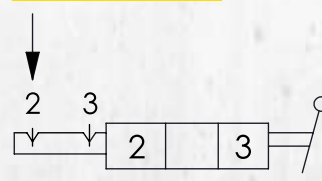
Stroke : -7 mm

SC8 2 Position Detent
2 Pozisyon Detantlı



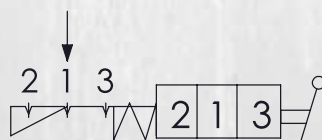
Stroke : +7 mm

SC13 2 Position Detent
2 Pozisyon Detantlı



Stroke : +14 mm

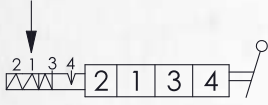
SC28 3 Position Spring Centered with Detent
3 Pozisyon Yaylı ve Detantlı



Stroke : ± 7 mm

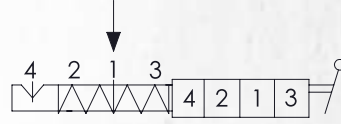
4 Position a Side Spool Positioners 4 Pozisyon A Tarafı Sürgü Kontrolleri

SC9 4 Position Spring Return, Detent in 4th Pos.
4 Pozisyon Yaylı, 4.Pozisyon Detantlı



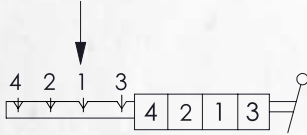
Used with Spool ST9B
ST9B Sürgü ile kullanılır

SC23 4 Position Spring Return, Detent in 4th Pos.
4 Pozisyon Yaylı, 4.Pozisyon Detantlı



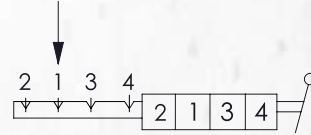
Used with Spool ST9A
ST9A Sürgü ile kullanılır

SC10 4 Position Detent in All Positions
4 Pozisyon Tüm Pozisyonlar Detantlı



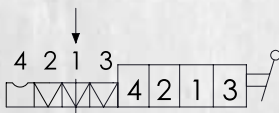
Used with Spool ST9A
ST9A Sürgü ile kullanılır

SC24 4 Position Detent in All Positions
4 Pozisyon Tüm Pozisyonlar Detantlı



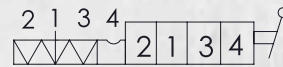
Used with Spool ST9B
ST9B Sürgü ile kullanılır

SC21 4 Position Spring Return, Feel Detent in 4th Pos.
4 Pozisyon Yaylı, 4.Pozisyon Hissetmeli Detantlı



Used with Spool ST10A
ST10A Sürgü ile kullanılır

SC22 4 Position Spring Return, Feel Detent in 4th Pos.
4 Pozisyon Yaylı, 4.Pozisyon Hissetmeli Detantlı



Used with Spool ST10B
ST10B Sürgü ile kullanılır

SC17

Supply Voltage	Order Code
12VDC	SC172
24VDC	SC174



On-Off Electro-Hydraulic Control

On-Off Electro-Hydraulic Control

Operation Characteristics

Pilot Pressure
Pilot Basıncı **Min. 10 Bar / 145 PSI**
Max. 25 Bar / 360 PSI

Back Pressure
Tank Basıncı **Max. 3 Bar**

Coil Characteristics

Coil Connection Type
Bobin Bağlantı Tipi **DIN 43650**

Supply Voltage
Voltaj **12VDC, 24VDC**

Protection Type
Koruma **IP65**

Nominal Voltage Tolerance
Nominal Voltaj Toleransı **±10%**

Duty cycle
Görev Çevrimi **100%**

Absorbed Power
Güç **18W**

Coil Insulation Class
Yalıtım Sınıfı **Class "F" 155°C**

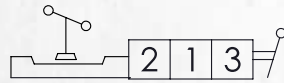
Maximum Temperatures
Maksimum Çalışma Sıcaklığı **100°C**

Stroke (mm)
Strok (mm) **±7 mm**

SC18

3 Positions, Microswitch Operation in both positions (NC)

3 Pozisyon, Çift Taraflı Mikrosviç Kontrol (NK)

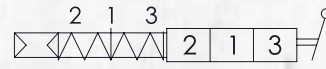


Stroke : ±7 mm

SC15

On-Off Pneumatic Control

On-Off Pnömatik Kontrol

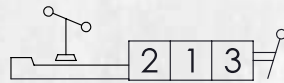


Stroke : ±7 mm

SC18A

3 Positions, Microswitch Operation in 3rd Position

3 Pozisyon, 3.Pozisyona Mikrosviç Kontrol

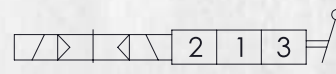


Stroke : ±7 mm

SC30

On-Off Electro-Pneumatic Control

On-Off Elektro-Pnömatik Kontrol



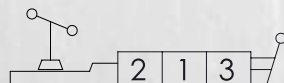
Stroke : ±7 mm

Supply Voltage	Order Code
12VDC	SC302
24VDC	SC304

SC18B

3 Positions, Microswitch Operation in 2nd Position

3 Pozisyon, 2.Pozisyona Mikrosviç Kontrol

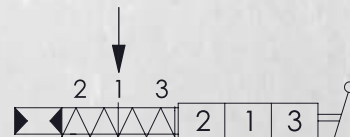


Stroke : ±7 mm

SC16

On-Off Hydraulic Control

On-Off Hidrolik Kontrol



Stroke : ±7 mm

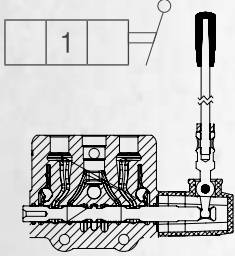
Spool Options Sürgü Tipleri

WKVM162C- R(180) / SC4 **ST11** K3 / H

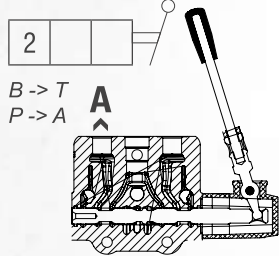
Spool Options
Sürgü Tipleri

Spool Positions Sürgü Pozisyonları

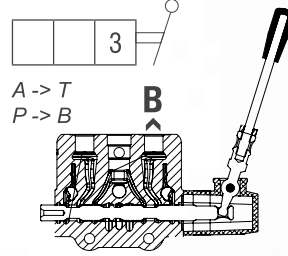
1st Position
1. Pozisyon
Spool Neutral Position
Nötr



2nd Position
2. Pozisyon
Spool In Position
Mil İçerde

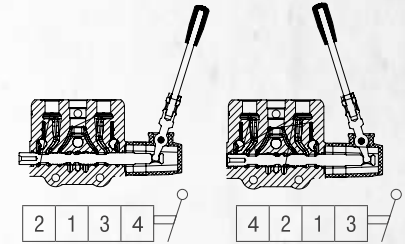


3rd Position
3. Pozisyon
Spool Out Position
Mil Dışarda



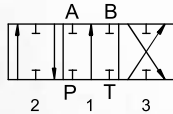
4th Position
4. Pozisyon

4th Pos. Spool Out 4. Pozisyon Mil Dışarda
4th Pos. Spool In 4. Pozisyon Mil İçerde



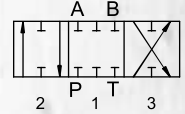
ST1

3 Position, Double Acting
3 Pozisyon, Çift Etkili



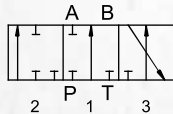
ST4

3 Position, Closed Center
3 Pozisyon, Kapalı Merkez



ST2

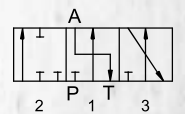
3 Position, A Port Single Acting
3 Pozisyon, A Port Tek Etkili



ST5

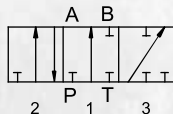
3 Position, A Port
Single Acting and to Tank

3 Pozisyon, A Port Tek Etkili
ve Tanka Açık



ST3

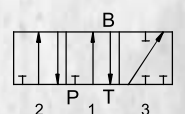
3 Position, B Port Single Acting
3 Pozisyon, B Port Tek Etkili



ST6

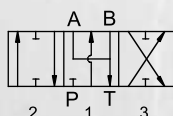
3 Position, B Port
Single Acting and to Tank

3 Pozisyon, B Port
Tek Etkili ve Tanka Açık



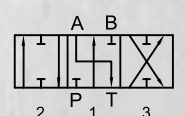
ST11

3 Position, Double Acting,
A/B to Tank
3 Pozisyon, Çift Etkili
A ve B Tanka Açık



ST7

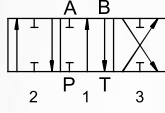
3 Position,
Double Acting A to Tank
3 Pozisyon,
Çift Etkili ve A Tanka Açık



ST8

3 Position,
Double Acting B to Tank

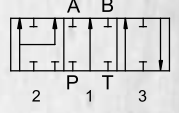
3 Pozisyon,
Çift Etkili ve B Tanka Açık



S12A

3 Position, Double Acting With
Regenerative in 3rd Position
(2nd Position Spool In)

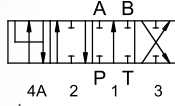
3 Pozisyon, Çift Etkili
3. Pozisyonda Rejeneratif
(Mil İçerde 2. Pozisyon)



ST9A

4 Position, Double Acting with
Float in 4th Position
(4th Position Spool In)

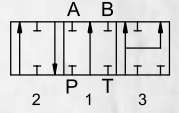
4 Pozisyon, 4. Pozisyonda Float
(Mil İçerde 4. Pozisyon)



ST12B

3 Position, Double Acting With
Regenerative in 2nd Position
(3rd Position Spool Out)

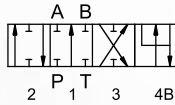
3 Pozisyon, Çift Etkili
2. Pozisyonda Rejeneratif
(Mil Dışarda 3. Pozisyon)



ST9B

4 Position, Double Acting with
Float in 4th Position
(4th Position Spool Out)

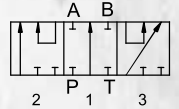
4 Pozisyon, 4. Pozisyonda Float
(Mil Dışarda 4. Pozisyon)



ST19

3 Position, Series Spool

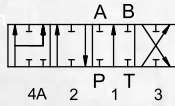
3 Pozisyon, Seri Sürgü



ST10A

4 Position, Double Acting with
Regenerative in 4th Position
(4th Position Spool In)

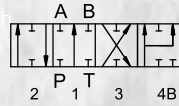
4 Pozisyon,
4. Pozisyonda Rejeneratif
(Mil İçerde 4. Pozisyon)



ST10B

4 Position, Double Acting With
Regenerative in 4th Position
(4th Position Spool Out)

4 Pozisyon,
4. Pozisyonda Rejeneratif
(Mil Dışarda 4. Pozisyon)



Auxiliary Valves

Yardımcı Valfler

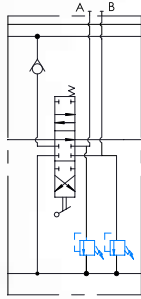
WKVM162C - R(180) /2x SC4 ST11 **V13** K3 / B

Auxiliary Valves
Yardımcı Valfler

V1

Antishock valves on A & B ports

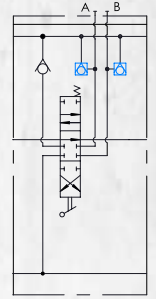
A & B portlarında antişok valfi



V4

Anticavitation valves on A & B ports

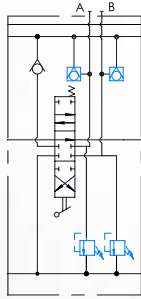
A & B portlarında antikavitasyon valfi



V7

Antishock & anticavitation valves on A & B ports

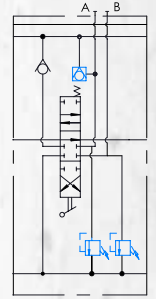
A & B portlarında antişok & antikavitasyon valfi



V8

Antishock & anticavitation valve on port A & antishock valve on port B

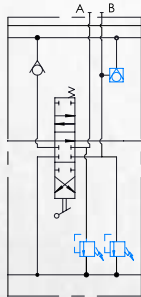
A portunda antişok & antikavitasyon valfi & B portunda antişok valfi



V9

Antishock valve on port A & antishock & anticavitation valve on port B

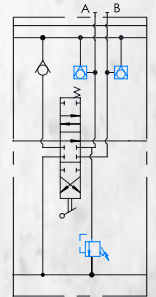
A portunda antişok valfi & B portunda antişok & antikavitasyon valfi



V12

Antishock & anticavitation valve on port A & anticavitation valve on port B

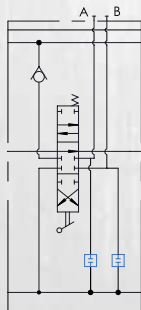
A portunda antişok & antikavitasyon valfi & B portunda antikavitasyon valfi



V13

Port relief cavity plug on A & B ports

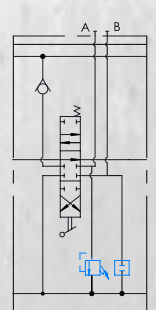
A & B portlarında kör tapa



V17

Antishock valve on port A & port relief cavity plug on port B

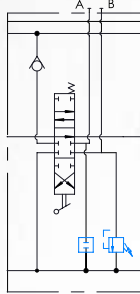
A portunda antişok & B portunda kör tapa



V18

Port relief cavity plug on port A
& antishock valve on port B

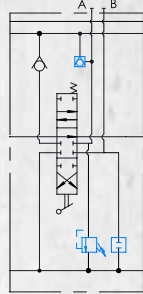
A portunda kör tapa
& B portunda antişok valfi



V19

Antishock & anticavitation valve
on port A & port relief cavity plug
on port B

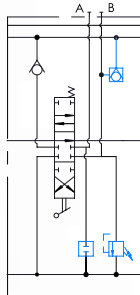
A portunda antişok
& antikavitasyon valfi
& B portunda kör tapa



V20

Port relief cavity plug on port A
& antishock & anticavitation valve
on port B

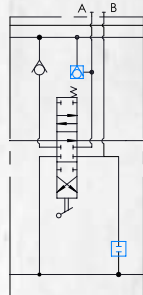
A portunda kör tapa
& B portunda antişok
& antikavitasyon valfi



V21

Anticavitation valve on port A
& port relief cavity plug on port B

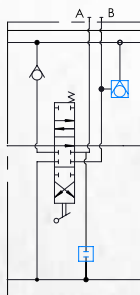
A portunda antikavitasyon valfi
& B portunda kör tapa



V22

Port relief cavity plug on port A
& anticavitation valve on port B

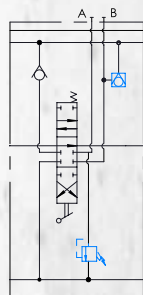
A portunda kör tapa
& B portunda antikavitasyon valfi



V27

Antishock valve on port A
& anticavitation valve on port B

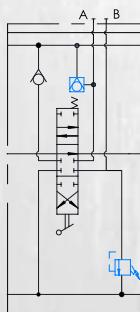
A portunda antişok
& B portunda antikavitasyon valfi



V28

Anticavitation valve on port A
& antishock valve on port B

A portunda antikavitasyon valfi
& B portunda antişok valfi



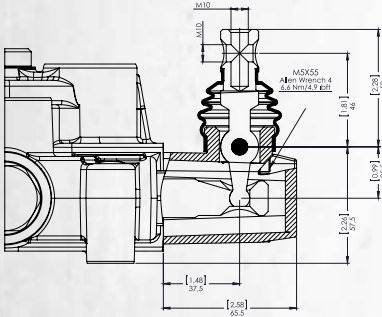
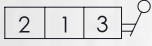
Lever Types

Sap Tipleri

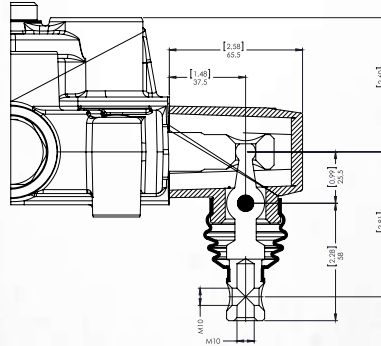
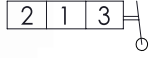
WKVM162C - R(180) / SC4 ST11 **K3** / H

Lever Types
Sap Tipleri

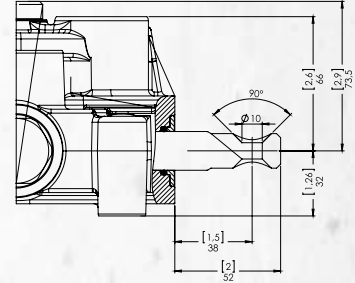
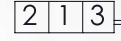
NO CODE Standard Lever Kit
Standart Sap Kapağı



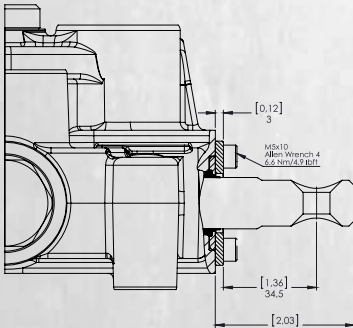
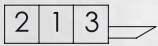
K1 Reverse Lever Kit
Ters montaj Sap Kapağı



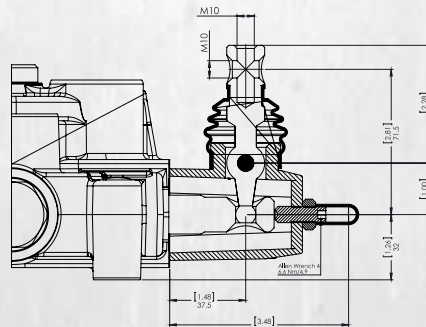
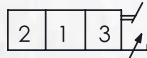
K2 No Lever
Sap Kapaksız



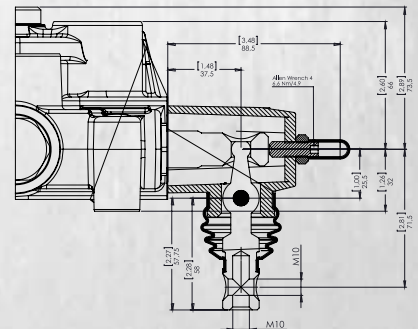
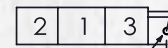
K3 Dust Proof Plate Kit
Toz Kapaklı



K5 Lever Cap with Spool Limiter
Sürgü Strok Kısıtlayıcı



K6 Rev. Lever Cap with Spool Limiter
Ters Montaj Sürgü Strok Kısıtlayıcı



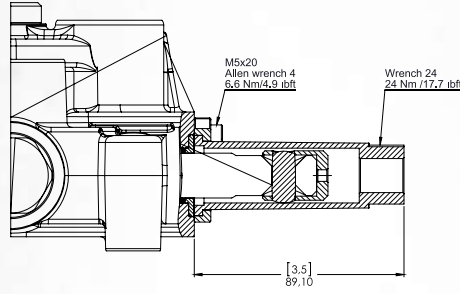
Order Code

KT

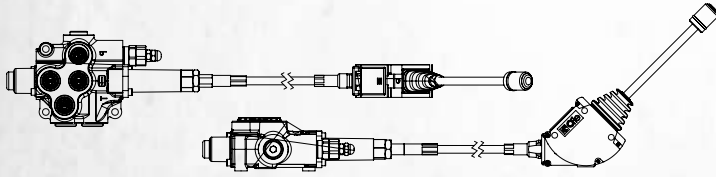
Cable Connection Kit

Kablo Bağlantı Kiti

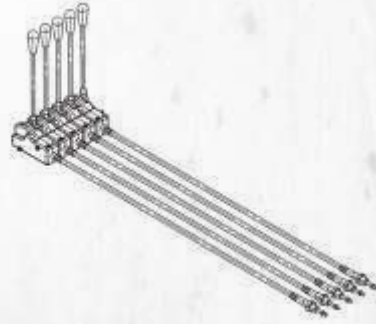
2 1 3



Lever Cable Remote Control Halat Kontrol



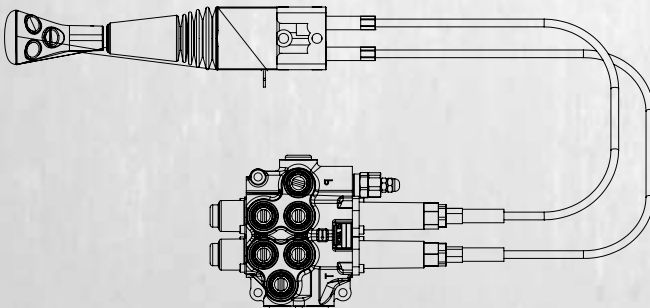
Cable remote control for Group of Levers Halat Kontrol Grubu



Lever cable remote control and cable remote control for group of levers are a modular system offering unlimited number of levers together through screws, also with many different configurations and cables lengths. Assembled on the valve only on request and extra charge. Please contact our sales department for details.

Halat kontrol ve halat kontrol grubu için farklı uzunlukları mevcuttur. Halat Kontrol grubu ise talebe göre çeşitli dilim sayıları için ve çeşitli uzunluklarda temin edilir. Kontrol grubu birbirine saplamalarla bağlanmaktadır. Lütfen detaylı bilgi için satış departmanımızla bağlantıya geçiniz.

Remote Joystick Control Joystik Halat Kontrol



Remote joystick control is available with several options. Please indicate the cable length demanded and contact our sales department for further demands.

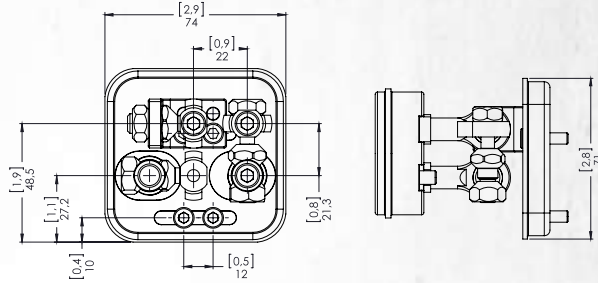
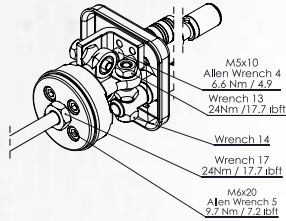
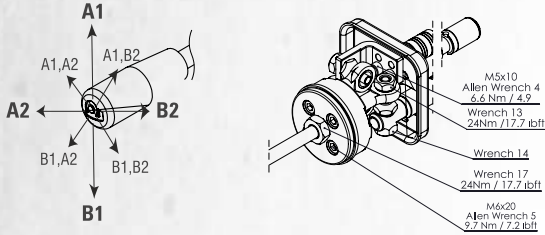
Joystik halat kontrol farklı çeşit ve uzunluklarda mevcuttur. Lütfen satış departmanımızla bağlantıya geçiniz.

Joystick Control Joystik Kontrol

K7

Manual Joystick with pivot on top left

Manuel Joystick Kontrol (Pivot Sol Üst)

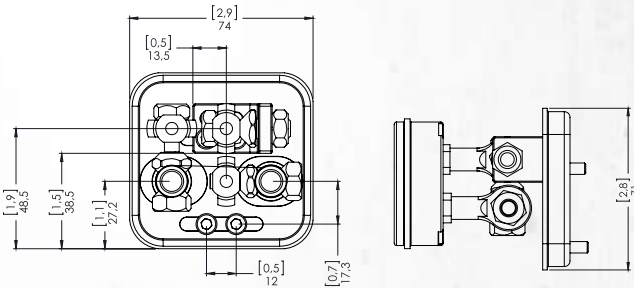
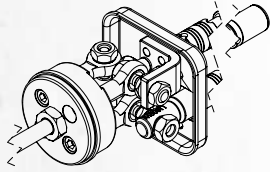
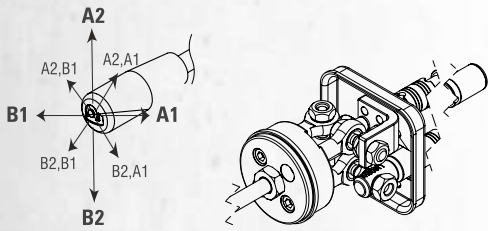


K7 is standard configuration unless otherwise specified.
Aksi belirtilmedikçe K7 standart konfigürasyondur.

K7B

Manual Joystick with pivot on top right

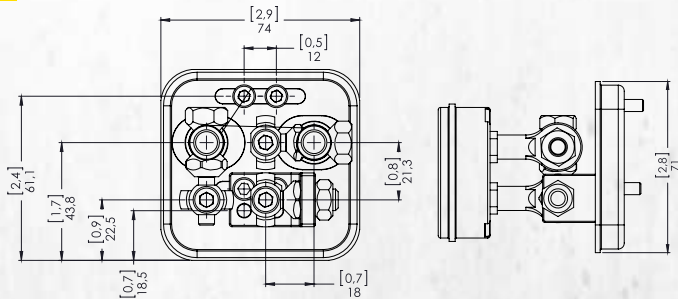
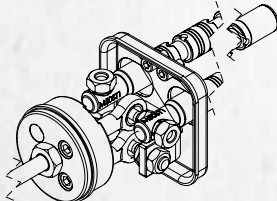
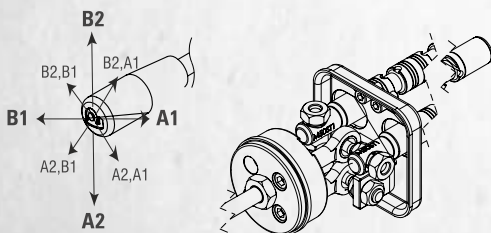
Manuel Joystick Kontrol (Pivot Sağ Üst)



K7C

Manual Joystick with pivot on bottom right

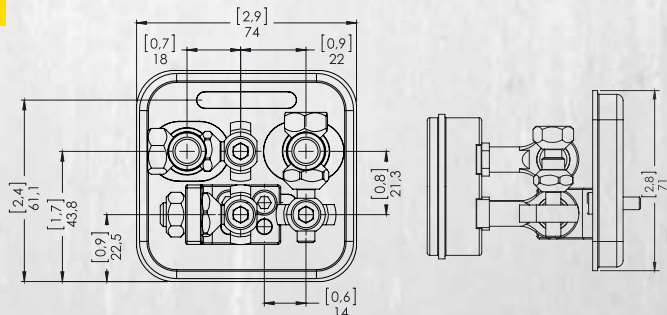
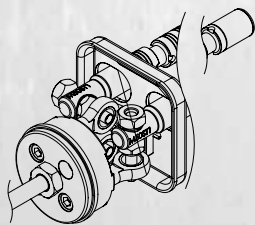
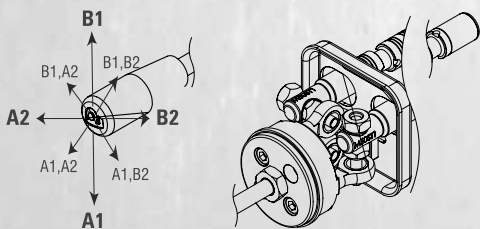
Manuel Joystick Kontrol (Pivot Sağ Alt)



K7D

Manual Joystick with pivot on bottom left

Manuel Joystick Kontrol (Pivot Sol Alt)



Outlet Options

Tank (T) Hattı Opsiyonları

WKVM162C - R(180) / SC4 ST11 K3 / H

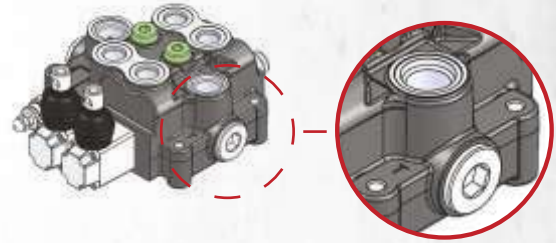
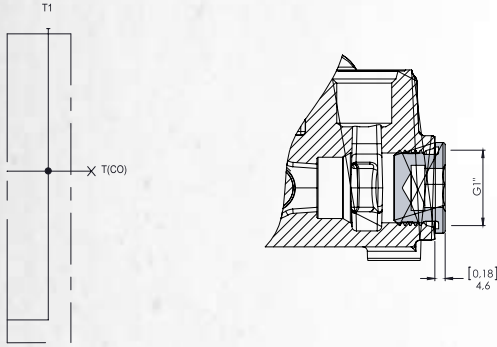
Outlet Options
Tank (T) Hattı Opsiyonları

Standard Open Center Upper Outlet (T1 open, T2 plugged)

Standart Açık Merkez (T1 açık, T2 kör)

Code / Kod

**NO
CODE**



Please contact our sales department for other outlet options.
Özel talepleriniz için lütfen Satış Departmanımızla bağlantıya geçin.

Outlet with Carry-Over

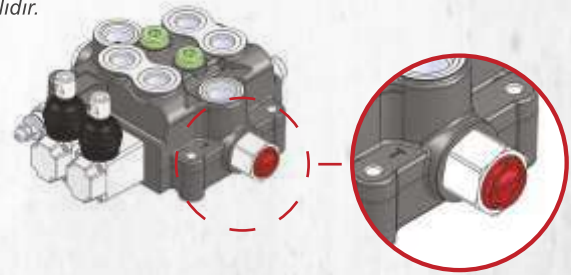
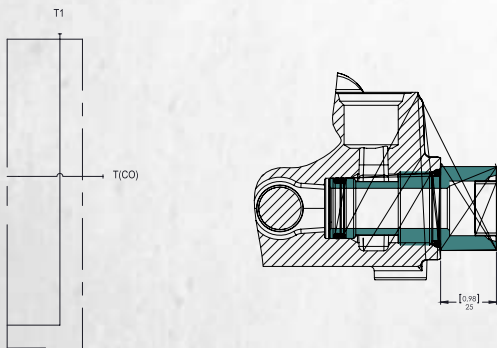
Carry-Over

When Carry-Over is used for series connection with another valve, T1 of the first valve must be connected to the tank.

Carry-over kullanıldığında, 1.valfin tank hattı (T1) mutlaka tanka bağlanmalıdır.

Code / Kod

H



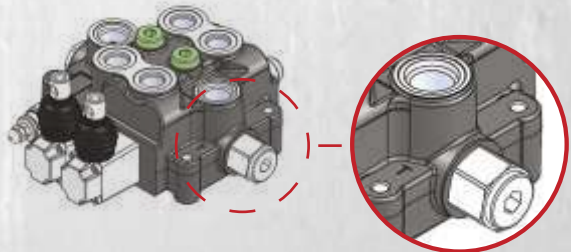
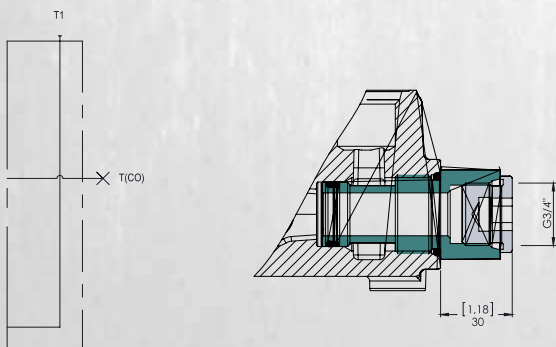
Carry-over is coded at the outlet options part. Ex; KVM162C-R(200)/SC1ST1/SC1ST1/H
Carry-over, dönüş kapağı bölümünde kodlanır.. Örn; KVM162C-R(200)/SC1ST1/SC1ST1/H

Outlet with Closed Center Plug

Kapalı Merkez

Code / Kod

K



Closed Center is coded at the outlet options part. Ex; WKVM162C-R(200)/SC1ST1/SC1ST1/K
Kapalı Merkez, dönüş kapağı bölümünde kodlanır. Örn; WKVM162C-R(200)/SC1ST1/SC1ST1/K

SERIES CIRCUIT
PARALEL CIRCUIT
Pneumatic
Hydraulic
CONTROL
REMOTE JOYSTICK
CABLE REMOTE
LEVER
SPOOL
MONOBLOCK VALVE
Directional Control
OIL VISCOSITY
BSP
COIL CONNECTION
MAIN RELIEF VALVE
Inlet
Outlet
CARRY-OVER
CLOSED CENTER PLUG



İşıklar Mh. Demiryolu Cad.
95/A Selçuklu / Konya / TURKEY

+90 332 323 323 4

+90 332 323 323 4

info@werahydraulic.com

www.werahydraulic.com
www.weraspc.com